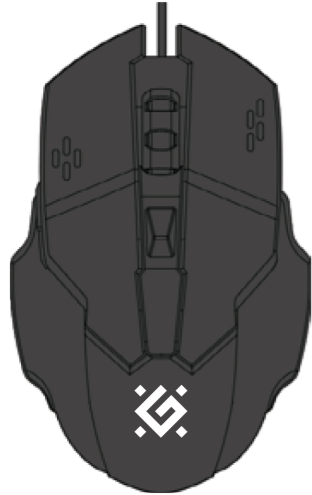
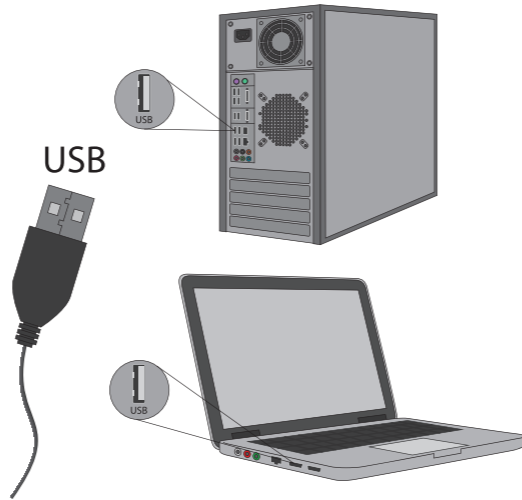
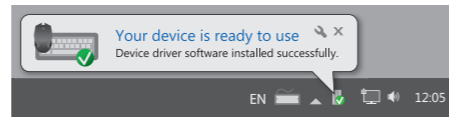
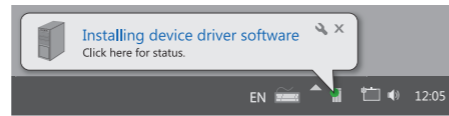
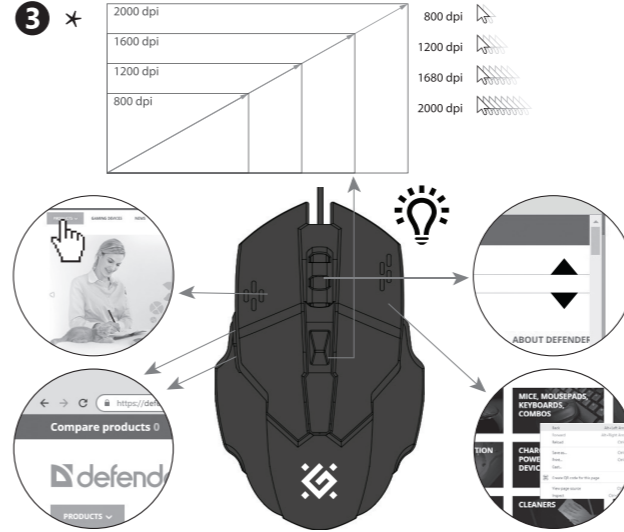


Operation manual

Wired gaming mouse



Boost GM-708L
Dragon GM-508
Furia GM-543
Inferno GM-536
Longshot GM-533
Oversider GM-917
Rixis GM-161
Rock GM-552
Shepard GM-620L
Strike GM-570
Warfare GM-880L
Wolverine GM-700L


1

2

3 *


*

ARM	AZE	BEL	CZ	DE
Կախկած մկնիկի մոդելից	Siçan modelindən asılı olaraq	У залежності від моделі миши	V závislosti na modelu myši	Abhängig vom Mausmodell
EN	ES	EST	FI	GEO
Depending on the mouse model	Dependiendo del modelo de ratón	Sõltuvalt hiire mudelist	Hiiren mallista riippuen	მაუსის მოდელიზა ამოკიდებული
GRE	HR / CNR	HUN	KAZ	PL
Ανάλογα με το μοντέλο του ποντικού	Ovisno o modelu miša	Az egér modell-jétől függően	Тінтуір моделине байланысты	W zależności od modelu myszy
RO	RU	SLV	SVK	SWE
În funcție de modelul mouse-ului	Зависит от модели мыши	Odrvisno od modela miške	Podľa modelu myši	Beroende på musmodellen
UKR	UZB			
Залежно від моделі миші	Sichqoncha modeliga qarab			



EN

Wired gaming mouse OPERATION MANUAL

Declaration of Conformity
 Operation of device (devices) may be affected by strong static, electrical or high-frequency fields (radio installations, mobile telephones, microwaves, electrostatic discharges)/ If occurs, Try increasing the distance from the devices causing the interference.



Disposal of batteries, electrical and electronic equipment
 This sign on the product, its batteries or package indicates that the product cannot be disposed together with domestic waste. It should be delivered to an appropriate batteries, electrical and electronic equipment collecting and recycling company.

Terms and conditions of safe and efficient use of the product
 Usage precautions:

1. Use the product for its intended purpose only.
2. Do not disassemble. This product does not contain parts that are entitled to self-sufficient repair. On the question of maintenance and replacement of a failed item apply to a dealer or Defender authorized service center. While receiving the product make sure that it is unbroken and there are no freely moving objects inside the product.
3. Keep away from children under the age of 3. May contain small parts.
4. Keep away from humidity. Never immerse the product in liquids.
5. Keep away from vibrations and mechanical stresses, which can cause mechanical damaging of the product. In case of mechanical damage no warranties are provided.
6. Do not use in the presence of visual damage. Do not use when the product is obviously defective.
7. Do not use the product at temperatures below and above recommended temperatures (see the operation manual), under the conditions of humidity evaporation, as well as in hostile environment.
8. Do not put into the mouth.
9. Do not use the product for industrial, medical or manufacturing purposes.
10. In case when shipment of the product was conducted in subzero temperatures, then before operating, the product should be kept in a warm placement (+16-25°C or 60-77°F) within 3 hours.
11. Turn off the device each time, when it is not planned to use it for extended period of time.
12. Do not use the device while driving the vehicle, if it is diverted attention, and in other cases when the law obliges you to turn off the device.

Product specifications and features can be found on the packaging and on defender-global.com

IMPORTER: Defender Technology OÜ, Betooni str 11, 11415, Tallinn, Estonia.
 Manufacturer: Zodic Technology Co., Ltd. Address: Building 301, Lushi Industrial Building, Zone 28, Dalang Community, Xin'an Street, Bao'an District, Shenzhen, China.
 Unlimited shelf life. Service life is 2 years. Date of manufacture: see on the package

Manufacturer keeps the right to change package contents and specifications indicated in this manual. The latest and detailed operation manual is available at www.defender-global.com

Made in China.

Warranty service is not effected in the following situations:

1. Expiration of the warranty period (warranty period is settled from the date of sale to the end user).
2. Incorrect filling in of the warranty card.
3. Incorrect plug in to power grid.
4. Breach to safety of guarantee seals, fixing joint assemblies of the case; presence of elements of opening on outside and inside parts of the product.
5. If the product designed for household use was used for professional purposes.
6. Damage due to penetration of foreign objects, substances, liquids or insects inside the product.
7. Damage due to breach to normal work of supply network – 220V +/- 10%. (except of automatic voltage regulators)
8. If the product was opened and repaired by a person unauthorized for that by the dealer.
9. Incorrect operation or careless handling.
10. Damage to the product due to natural disasters.
11. Presence of elements indicating mechanical damage (fall, hit).
12. Disability of connected devices of other producers.

