

Shenzhen Most Technology Service Co., Limited

No.5, Nangshan 2th Rd., North Hi-Tech Industrial park, Nanshan Shenzhen Guangdong, China

Tel:(86) 755-86026850

Http:// www.szmost.com

Report No.: MTHN19070127

Fax:(86) 755-26013350

Email: szmost@szmost.com

Customer : SHENZHEN MARK TRADING CO., LTD.

**Address : 6th Floor, Building A, DongFangYaYuan, Chen Tian Communities, Xixiang
Bao'an District, Shenzhen, China**

Report on the submitted sample said to be

Sample name : 2.0Speaker

SG-265,SG*(**stand for 0-9), SG***BT(**stand for 0-9), SG***G(**stand**

Model name : for 0-9), SK-**(**stand for 0-9), ES-****(**stand for 0-9), ES-***(**stand
for 0-9), WS-***(**stand for 0-9)**

Item/Lot No. : --

Material : --

Trademark : MARVO, XTRIKE ME, @ONE

Buyer : --

Supplier : --

Manufacturer : SHENZHEN MARK TRADING CO., LTD.

**Address : 6th Floor, Building A, DongFangYaYuan, Chen Tian Communities, Xixiang
Bao'an District, Shenzhen, China**

Factory : SHENZHEN MARK TRADING CO., LTD.

**Address : 6th Floor, Building A, DongFangYaYuan, Chen Tian Communities, Xixiang
Bao'an District, Shenzhen, China**

Date of receipt of test item: 2019-07-15

Date (s) of performance of tests: 2019-07-15 to 2019-07-29

RESULTS: (PASS) Please refer to next page.

Based on the performed tests on submitted sample(s), the results of Lead, Mercury, Cadmium, Hexavalent chromium, Polybrominated biphenyls (PBBs), Polybrominated diphenyl ethers (PBDEs), DBP, BBP, DEHP, DIBP comply with the limits as set by RoHS Directive (EU) 2015/863 amending Annex II to Directive 2011/65/EU.

*****FOR FURTHER DETAILS, PLEASE REFER TO THE FOLLOWING PAGE (S) *****

Signed for shenzhen Most Technology Service Co., Limited

Written by:

Ann

Inspected by:

Jack Chan

Approved by:

Yutian



Consolidation of Test Data

No.	Test Sample	Test Data(ppm)	Limits	Remark:
1	DC Plug			
1-1	Brassy metal	Cd: N.D. Pb:6.7. Hg: N.D. Cr ⁶⁺ : N.D. PBBs: N.D. PBDEs: N.D. DBP: ND BBP: ND DEHP:ND DIBP: ND	Cd: 0.01%(100mg/kg) Pb: 0.1%(1000mg/kg) Hg: 0.1%(1000mg/kg) Cr ⁶⁺ : 0.1%(1000mg/kg) PBBs: 0.1%(1000mg/kg) PBDEs: 0.1%(1000mg/kg) DBP: 0.1%(1000mg/kg) BBP: 0.1%(1000mg/kg) DEHP: 0.1%(1000mg/kg) DIBP: 0.1%(1000mg/kg)	--
1-2	Black plastic grains	Cd: N.D. Pb: N.D. Hg: N.D. Cr ⁶⁺ : N.D. PBBs: N.D. PBDEs: N.D. DBP: ND BBP: ND DEHP:ND DIBP: ND	Cd: 0.01%(100mg/kg) Pb: 0.1%(1000mg/kg) Hg: 0.1%(1000mg/kg) Cr ⁶⁺ : 0.1%(1000mg/kg) PBBs: 0.1%(1000mg/kg) PBDEs: 0.1%(1000mg/kg) DBP: 0.1%(1000mg/kg) BBP: 0.1%(1000mg/kg) DEHP: 0.1%(1000mg/kg) DIBP: 0.1%(1000mg/kg)	--
1-3	Black liquid	Cd: N.D. Pb: N.D. Hg: N.D. Cr ⁶⁺ : N.D. PBBs: N.D. PBDEs: N.D. DBP: ND BBP: ND DEHP:ND DIBP: ND	Cd: 0.01%(100mg/kg) Pb: 0.1%(1000mg/kg) Hg: 0.1%(1000mg/kg) Cr ⁶⁺ : 0.1%(1000mg/kg) PBBs: 0.1%(1000mg/kg) PBDEs: 0.1%(1000mg/kg) DBP: 0.1%(1000mg/kg) BBP: 0.1%(1000mg/kg) DEHP: 0.1%(1000mg/kg) DIBP: 0.1%(1000mg/kg)	--
2	IC			
2-1	Black solid body part (mixed all)	Cd: N.D. Pb: N.D. Hg: N.D.	Cd: 0.01%(100mg/kg) Pb: 0.1%(1000mg/kg) Hg: 0.1%(1000mg/kg)	--

		Cr ⁶⁺ : N.D. PBBs: N.D. PBDEs: N.D. DBP: ND BBP: ND DEHP:ND DIBP: ND	Cr ⁶⁺ : 0.1%(1000mg/kg) PBBs: 0.1%(1000mg/kg) PBDEs: 0.1%(1000mg/kg) DBP: 0.1%(1000mg/kg) BBP: 0.1%(1000mg/kg) DEHP: 0.1%(1000mg/kg) DIBP: 0.1%(1000mg/kg)	
2-2	Silvery pin	Cd: N.D. Pb: N.D. Hg: N.D. Cr ⁶⁺ : N.D. PBBs: N.D. PBDEs: N.D. DBP: ND BBP: ND DEHP:ND DIBP: ND	Cd: 0.01%(100mg/kg) Pb: 0.1%(1000mg/kg) Hg: 0.1%(1000mg/kg) Cr ⁶⁺ : 0.1%(1000mg/kg) PBBs: 0.1%(1000mg/kg) PBDEs: 0.1%(1000mg/kg) DBP: 0.1%(1000mg/kg) BBP: 0.1%(1000mg/kg) DEHP: 0.1%(1000mg/kg) DIBP: 0.1%(1000mg/kg)	--
3	USB output terminal			
3-1	White plastic pellets	Cd: N.D. Pb: N.D. Hg: N.D. Cr ⁶⁺ : N.D. PBBs: N.D. PBDEs: N.D. DBP: ND BBP: ND DEHP:ND DIBP: ND	Cd: 0.01%(100mg/kg) Pb: 0.1%(1000mg/kg) Hg: 0.1%(1000mg/kg) Cr ⁶⁺ : 0.1%(1000mg/kg) PBBs: 0.1%(1000mg/kg) PBDEs: 0.1%(1000mg/kg) DBP: 0.1%(1000mg/kg) BBP: 0.1%(1000mg/kg) DEHP: 0.1%(1000mg/kg) DIBP: 0.1%(1000mg/kg)	--
3-2	Silver-gray plated metal	Cd: N.D. Pb: N.D. Hg: N.D. Cr ⁶⁺ : N.D. PBBs: N.D. PBDEs: N.D. DBP: ND BBP: ND DEHP:ND DIBP: ND	Cd: 0.01%(100mg/kg) Pb: 0.1%(1000mg/kg) Hg: 0.1%(1000mg/kg) Cr ⁶⁺ : 0.1%(1000mg/kg) PBBs: 0.1%(1000mg/kg) PBDEs: 0.1%(1000mg/kg) DBP: 0.1%(1000mg/kg) BBP: 0.1%(1000mg/kg) DEHP: 0.1%(1000mg/kg) DIBP: 0.1%(1000mg/kg)	--
3-3	Silver metal	Cd: N.D. Pb: N.D. Hg: N.D. Cr ⁶⁺ : N.D.	Cd: 0.01%(100mg/kg) Pb: 0.1%(1000mg/kg) Hg: 0.1%(1000mg/kg) Cr ⁶⁺ : 0.1%(1000mg/kg)	--

		PBBs: N.D. PBDEs: N.D. DBP: ND BBP: ND DEHP:ND DIBP: ND	PBBs: 0.1%(1000mg/kg) PBDEs: 0.1%(1000mg/kg) DBP: 0.1%(1000mg/kg) BBP: 0.1%(1000mg/kg) DEHP: 0.1%(1000mg/kg) DIBP: 0.1%(1000mg/kg)	
4	Lithium rechargeable battery	Cd: N.D. Pb: N.D. Hg: N.D. Cr ⁶⁺ : N.D. PBBs: N.D. PBDEs: N.D. DBP: ND BBP: ND DEHP:ND DIBP: ND	Cd: 0.01%(100mg/kg) Pb: 0.1%(1000mg/kg) Hg: 0.1%(1000mg/kg) Cr ⁶⁺ : 0.1%(1000mg/kg) PBBs: 0.1%(1000mg/kg) PBDEs: 0.1%(1000mg/kg) DBP: 0.1%(1000mg/kg) BBP: 0.1%(1000mg/kg) DEHP: 0.1%(1000mg/kg) DIBP: 0.1%(1000mg/kg)	--
5	PCB	Cd: N.D. Pb: N.D. Hg: N.D. Cr ⁶⁺ : N.D. PBBs: N.D. PBDEs: N.D. DBP: ND BBP: ND DEHP:ND DIBP: ND	Cd: 0.01%(100mg/kg) Pb: 0.1%(1000mg/kg) Hg: 0.1%(1000mg/kg) Cr ⁶⁺ : 0.1%(1000mg/kg) PBBs: 0.1%(1000mg/kg) PBDEs: 0.1%(1000mg/kg) DBP: 0.1%(1000mg/kg) BBP: 0.1%(1000mg/kg) DEHP: 0.1%(1000mg/kg) DIBP: 0.1%(1000mg/kg)	--
6-1	Black plastic w/ brown printing	Cd: N.D. Pb: N.D. Hg: N.D. Cr ⁶⁺ : N.D. PBBs: N.D. PBDEs: N.D. DBP: ND BBP: ND DEHP:ND DIBP: ND	Cd: 0.01%(100mg/kg) Pb: 0.1%(1000mg/kg) Hg: 0.1%(1000mg/kg) Cr ⁶⁺ : 0.1%(1000mg/kg) PBBs: 0.1%(1000mg/kg) PBDEs: 0.1%(1000mg/kg) DBP: 0.1%(1000mg/kg) BBP: 0.1%(1000mg/kg) DEHP: 0.1%(1000mg/kg) DIBP: 0.1%(1000mg/kg)	--
6-2	Copper-colored metal	Cd: N.D. Pb: N.D. Hg: N.D. Cr ⁶⁺ : N.D. PBBs: N.D. PBDEs: N.D. DBP: ND	Cd: 0.01%(100mg/kg) Pb: 0.1%(1000mg/kg) Hg: 0.1%(1000mg/kg) Cr ⁶⁺ : 0.1%(1000mg/kg) PBBs: 0.1%(1000mg/kg) PBDEs: 0.1%(1000mg/kg) DBP: 0.1%(1000mg/kg)	--

		BBP: ND DEHP:ND DIBP: ND	BBP: 0.1%(1000mg/kg) DEHP: 0.1%(1000mg/kg) DIBP: 0.1%(1000mg/kg)	
6-3	Silvery metal	Cd: N.D. Pb: N.D. Hg: N.D. Cr ⁶⁺ : N.D. PBBs: N.D. PBDEs: N.D. DBP: ND BBP: ND DEHP:ND DIBP: ND	Cd: 0.01%(100mg/kg) Pb: 0.1%(1000mg/kg) Hg: 0.1%(1000mg/kg) Cr ⁶⁺ : 0.1%(1000mg/kg) PBBs: 0.1%(1000mg/kg) PBDEs: 0.1%(1000mg/kg) DBP: 0.1%(1000mg/kg) BBP: 0.1%(1000mg/kg) DEHP: 0.1%(1000mg/kg) DIBP: 0.1%(1000mg/kg)	--
7	Transparent body w/ silvery metal pin (mixed)	Cd: N.D. Pb: N.D. Hg: N.D. Cr ⁶⁺ : N.D. PBBs: N.D. PBDEs: N.D. DBP: ND BBP: ND DEHP:ND DIBP: ND	Cd: 0.01%(100mg/kg) Pb: 0.1%(1000mg/kg) Hg: 0.1%(1000mg/kg) Cr ⁶⁺ : 0.1%(1000mg/kg) PBBs: 0.1%(1000mg/kg) PBDEs: 0.1%(1000mg/kg) DBP: 0.1%(1000mg/kg) BBP: 0.1%(1000mg/kg) DEHP: 0.1%(1000mg/kg) DIBP: 0.1%(1000mg/kg)	--
7-1	Silvery metal bar	Cd: N.D. Pb: N.D. Hg: N.D. Cr ⁶⁺ : N.D. PBBs: N.D. PBDEs: N.D. DBP: ND BBP: ND DEHP:ND DIBP: ND	Cd: 0.01%(100mg/kg) Pb: 0.1%(1000mg/kg) Hg: 0.1%(1000mg/kg) Cr ⁶⁺ : 0.1%(1000mg/kg) PBBs: 0.1%(1000mg/kg) PBDEs: 0.1%(1000mg/kg) DBP: 0.1%(1000mg/kg) BBP: 0.1%(1000mg/kg) DEHP: 0.1%(1000mg/kg) DIBP: 0.1%(1000mg/kg)	--
7-2	Dk-grey core w/ silvery surface (Nickel zinc soft magnetic)	Cd: N.D. Pb: N.D. Hg: N.D. Cr ⁶⁺ : N.D. PBBs: N.D. PBDEs: N.D. DBP: ND BBP: ND DEHP:ND DIBP: ND	Cd: 0.01%(100mg/kg) Pb: 0.1%(1000mg/kg) Hg: 0.1%(1000mg/kg) Cr ⁶⁺ : 0.1%(1000mg/kg) PBBs: 0.1%(1000mg/kg) PBDEs: 0.1%(1000mg/kg) DBP: 0.1%(1000mg/kg) BBP: 0.1%(1000mg/kg) DEHP: 0.1%(1000mg/kg) DIBP: 0.1%(1000mg/kg)	--

7-3	Brown surfaced metal wire (Enameled copper wire)	Cd: N.D. Pb: N.D. Hg: N.D. Cr ⁶⁺ : N.D. PBBs: N.D. PBDEs: N.D. DBP: ND BBP: ND DEHP:ND DIBP: ND	Cd: 0.01%(100mg/kg) Pb: 0.1%(1000mg/kg) Hg: 0.1%(1000mg/kg) Cr ⁶⁺ : 0.1%(1000mg/kg) PBBs: 0.1%(1000mg/kg) PBDEs: 0.1%(1000mg/kg) DBP: 0.1%(1000mg/kg) BBP: 0.1%(1000mg/kg) DEHP: 0.1%(1000mg/kg) DIBP: 0.1%(1000mg/kg)	--
8-1	General purpose chip resistors (42013)	Cd: N.D. Pb: N.D. Hg: N.D. Cr ⁶⁺ : N.D. PBBs: N.D. PBDEs: N.D. DBP: ND BBP: ND DEHP:ND DIBP: ND	Cd: 0.01%(100mg/kg) Pb: 0.1%(1000mg/kg) Hg: 0.1%(1000mg/kg) Cr ⁶⁺ : 0.1%(1000mg/kg) PBBs: 0.1%(1000mg/kg) PBDEs: 0.1%(1000mg/kg) DBP: 0.1%(1000mg/kg) BBP: 0.1%(1000mg/kg) DEHP: 0.1%(1000mg/kg) DIBP: 0.1%(1000mg/kg)	--
8-2	Multi-layer ceramic capacitor (NPO 0402)	Cd: N.D. Pb: N.D. Hg: N.D. Cr ⁶⁺ : N.D. PBBs: N.D. PBDEs: N.D. DBP: ND BBP: ND DEHP:ND DIBP: ND	Cd: 0.01%(100mg/kg) Pb: 0.1%(1000mg/kg) Hg: 0.1%(1000mg/kg) Cr ⁶⁺ : 0.1%(1000mg/kg) PBBs: 0.1%(1000mg/kg) PBDEs: 0.1%(1000mg/kg) DBP: 0.1%(1000mg/kg) BBP: 0.1%(1000mg/kg) DEHP: 0.1%(1000mg/kg) DIBP: 0.1%(1000mg/kg)	--
8-3	Multi-layer ceramic capacitor (NPO 0603)	Cd: N.D. Pb: N.D. Hg: N.D. Cr ⁶⁺ : N.D. PBBs: N.D. PBDEs: N.D. DBP: ND BBP: ND DEHP:ND DIBP: ND	Cd: 0.01%(100mg/kg) Pb: 0.1%(1000mg/kg) Hg: 0.1%(1000mg/kg) Cr ⁶⁺ : 0.1%(1000mg/kg) PBBs: 0.1%(1000mg/kg) PBDEs: 0.1%(1000mg/kg) DBP: 0.1%(1000mg/kg) BBP: 0.1%(1000mg/kg) DEHP: 0.1%(1000mg/kg) DIBP: 0.1%(1000mg/kg)	--
8-4	Multi-layer ceramic capacitor (NPO 0805)	Cd: N.D. Pb: N.D. Hg: N.D.	Cd: 0.01%(100mg/kg) Pb: 0.1%(1000mg/kg) Hg: 0.1%(1000mg/kg)	--

		Cr ⁶⁺ : N.D. PBBs: N.D. PBDEs: N.D. DBP: ND BBP: ND DEHP:ND DIBP: ND	Cr ⁶⁺ : 0.1%(1000mg/kg) PBBs: 0.1%(1000mg/kg) PBDEs: 0.1%(1000mg/kg) DBP: 0.1%(1000mg/kg) BBP: 0.1%(1000mg/kg) DEHP: 0.1%(1000mg/kg) DIBP: 0.1%(1000mg/kg)	
8-5	Multi-layer ceramic capacitor (X7R 0402)	Cd: N.D. Pb: N.D. Hg: N.D. Cr ⁶⁺ : N.D. PBBs: N.D. PBDEs: N.D. DBP: ND BBP: ND DEHP:ND DIBP: ND	Cd: 0.01%(100mg/kg) Pb: 0.1%(1000mg/kg) Hg: 0.1%(1000mg/kg) Cr ⁶⁺ : 0.1%(1000mg/kg) PBBs: 0.1%(1000mg/kg) PBDEs: 0.1%(1000mg/kg) DBP: 0.1%(1000mg/kg) BBP: 0.1%(1000mg/kg) DEHP: 0.1%(1000mg/kg) DIBP: 0.1%(1000mg/kg)	--
8-6	Multi-layer ceramic capacitor (X7R 0603)	Cd: N.D. Pb: N.D. Hg: N.D. Cr ⁶⁺ : N.D. PBBs: N.D. PBDEs: N.D. DBP: ND BBP: ND DEHP:ND DIBP: ND	Cd: 0.01%(100mg/kg) Pb: 0.1%(1000mg/kg) Hg: 0.1%(1000mg/kg) Cr ⁶⁺ : 0.1%(1000mg/kg) PBBs: 0.1%(1000mg/kg) PBDEs: 0.1%(1000mg/kg) DBP: 0.1%(1000mg/kg) BBP: 0.1%(1000mg/kg) DEHP: 0.1%(1000mg/kg) DIBP: 0.1%(1000mg/kg)	--
8-7	Multi-layer ceramic capacitor (X7R 0805)	Cd: N.D. Pb: N.D. Hg: N.D. Cr ⁶⁺ : N.D. PBBs: N.D. PBDEs: N.D. DBP: ND BBP: ND DEHP:ND DIBP: ND	Cd: 0.01%(100mg/kg) Pb: 0.1%(1000mg/kg) Hg: 0.1%(1000mg/kg) Cr ⁶⁺ : 0.1%(1000mg/kg) PBBs: 0.1%(1000mg/kg) PBDEs: 0.1%(1000mg/kg) DBP: 0.1%(1000mg/kg) BBP: 0.1%(1000mg/kg) DEHP: 0.1%(1000mg/kg) DIBP: 0.1%(1000mg/kg)	--
8-8	Multi-layer ceramic capacitor (X7R 1206)	Cd: N.D. Pb: N.D. Hg: N.D. Cr ⁶⁺ : N.D. PBBs: N.D. PBDEs: N.D.	Cd: 0.01%(100mg/kg) Pb: 0.1%(1000mg/kg) Hg: 0.1%(1000mg/kg) Cr ⁶⁺ : 0.1%(1000mg/kg) PBBs: 0.1%(1000mg/kg) PBDEs: 0.1%(1000mg/kg)	--

		DBP: ND BBP: ND DEHP:ND DIBP: ND	DBP: 0.1%(1000mg/kg) BBP: 0.1%(1000mg/kg) DEHP: 0.1%(1000mg/kg) DIBP: 0.1%(1000mg/kg)	
8-9	Multi-layer ceramic capacitor (X5R 0201)	Cd: N.D. Pb: N.D. Hg: N.D. Cr ⁶⁺ : N.D. PBBs: N.D. PBDEs: N.D. DBP: ND BBP: ND DEHP:ND DIBP: ND	Cd: 0.01%(100mg/kg) Pb: 0.1%(1000mg/kg) Hg: 0.1%(1000mg/kg) Cr ⁶⁺ : 0.1%(1000mg/kg) PBBs: 0.1%(1000mg/kg) PBDEs: 0.1%(1000mg/kg) DBP: 0.1%(1000mg/kg) BBP: 0.1%(1000mg/kg) DEHP: 0.1%(1000mg/kg) DIBP: 0.1%(1000mg/kg)	--
8-10	Multi-layer ceramic capacitor (X5R 0402)	Cd: N.D. Pb: N.D. Hg: N.D. Cr ⁶⁺ : N.D. PBBs: N.D. PBDEs: N.D. DBP: ND BBP: ND DEHP:ND DIBP: ND	Cd: 0.01%(100mg/kg) Pb: 0.1%(1000mg/kg) Hg: 0.1%(1000mg/kg) Cr ⁶⁺ : 0.1%(1000mg/kg) PBBs: 0.1%(1000mg/kg) PBDEs: 0.1%(1000mg/kg) DBP: 0.1%(1000mg/kg) BBP: 0.1%(1000mg/kg) DEHP: 0.1%(1000mg/kg) DIBP: 0.1%(1000mg/kg)	--
8-11	Multi-layer ceramic capacitor (X5R 0603)	Cd: N.D. Pb: N.D. Hg: N.D. Cr ⁶⁺ : N.D. PBBs: N.D. PBDEs: N.D. DBP: ND BBP: ND DEHP:ND DIBP: ND	Cd: 0.01%(100mg/kg) Pb: 0.1%(1000mg/kg) Hg: 0.1%(1000mg/kg) Cr ⁶⁺ : 0.1%(1000mg/kg) PBBs: 0.1%(1000mg/kg) PBDEs: 0.1%(1000mg/kg) DBP: 0.1%(1000mg/kg) BBP: 0.1%(1000mg/kg) DEHP: 0.1%(1000mg/kg) DIBP: 0.1%(1000mg/kg)	--
8-12	Multi-layer ceramic capacitor (X5R 0805)	Cd: N.D. Pb: N.D. Hg: N.D. Cr ⁶⁺ : N.D. PBBs: N.D. PBDEs: N.D. DBP: ND BBP: ND DEHP:ND	Cd: 0.01%(100mg/kg) Pb: 0.1%(1000mg/kg) Hg: 0.1%(1000mg/kg) Cr ⁶⁺ : 0.1%(1000mg/kg) PBBs: 0.1%(1000mg/kg) PBDEs: 0.1%(1000mg/kg) DBP: 0.1%(1000mg/kg) BBP: 0.1%(1000mg/kg) DEHP: 0.1%(1000mg/kg)	--

		DIBP: ND	DIBP: 0.1%(1000mg/kg)	
8-13	Multi-layer ceramic capacitor (X5R 1206)	Cd: N.D. Pb: N.D. Hg: N.D. Cr ⁶⁺ : N.D. PBBs: N.D. PBDEs: N.D. DBP: ND BBP: ND DEHP:ND DIBP: ND	Cd: 0.01%(100mg/kg) Pb: 0.1%(1000mg/kg) Hg: 0.1%(1000mg/kg) Cr ⁶⁺ : 0.1%(1000mg/kg) PBBs: 0.1%(1000mg/kg) PBDEs: 0.1%(1000mg/kg) DBP: 0.1%(1000mg/kg) BBP: 0.1%(1000mg/kg) DEHP: 0.1%(1000mg/kg) DIBP: 0.1%(1000mg/kg)	--
8-14	Multi-layer ceramic capacitor (Y5V 0402)	Cd: N.D. Pb: N.D. Hg: N.D. Cr ⁶⁺ : N.D. PBBs: N.D. PBDEs: N.D. DBP: ND BBP: ND DEHP:ND DIBP: ND	Cd: 0.01%(100mg/kg) Pb: 0.1%(1000mg/kg) Hg: 0.1%(1000mg/kg) Cr ⁶⁺ : 0.1%(1000mg/kg) PBBs: 0.1%(1000mg/kg) PBDEs: 0.1%(1000mg/kg) DBP: 0.1%(1000mg/kg) BBP: 0.1%(1000mg/kg) DEHP: 0.1%(1000mg/kg) DIBP: 0.1%(1000mg/kg)	--
8-15	Multi-layer ceramic capacitor (Y5V 0603)	Cd: N.D. Pb: N.D. Hg: N.D. Cr ⁶⁺ : N.D. PBBs: N.D. PBDEs: N.D. DBP: ND BBP: ND DEHP:ND DIBP: ND	Cd: 0.01%(100mg/kg) Pb: 0.1%(1000mg/kg) Hg: 0.1%(1000mg/kg) Cr ⁶⁺ : 0.1%(1000mg/kg) PBBs: 0.1%(1000mg/kg) PBDEs: 0.1%(1000mg/kg) DBP: 0.1%(1000mg/kg) BBP: 0.1%(1000mg/kg) DEHP: 0.1%(1000mg/kg) DIBP: 0.1%(1000mg/kg)	--
8-16	Multi-layer ceramic capacitor (Y5V 0402)	Cd: N.D. Pb: N.D. Hg: N.D. Cr ⁶⁺ : N.D. PBBs: N.D. PBDEs: N.D. DBP: ND BBP: ND DEHP:ND DIBP: ND	Cd: 0.01%(100mg/kg) Pb: 0.1%(1000mg/kg) Hg: 0.1%(1000mg/kg) Cr ⁶⁺ : 0.1%(1000mg/kg) PBBs: 0.1%(1000mg/kg) PBDEs: 0.1%(1000mg/kg) DBP: 0.1%(1000mg/kg) BBP: 0.1%(1000mg/kg) DEHP: 0.1%(1000mg/kg) DIBP: 0.1%(1000mg/kg)	--

8-17	Multi-layer ceramic capacitor (Y5V 0603)	Cd: N.D. Pb: N.D. Hg: N.D. Cr ⁶⁺ : N.D. PBBs: N.D. PBDEs: N.D. DBP: ND BBP: ND DEHP:ND DIBP: ND	Cd: 0.01%(100mg/kg) Pb: 0.1%(1000mg/kg) Hg: 0.1%(1000mg/kg) Cr ⁶⁺ : 0.1%(1000mg/kg) PBBs: 0.1%(1000mg/kg) PBDEs: 0.1%(1000mg/kg) DBP: 0.1%(1000mg/kg) BBP: 0.1%(1000mg/kg) DEHP: 0.1%(1000mg/kg) DIBP: 0.1%(1000mg/kg)	--
8-18	Multi-layer ceramic capacitor (Y5V 0805)	Cd: N.D. Pb: N.D. Hg: N.D. Cr ⁶⁺ : N.D. PBBs: N.D. PBDEs: N.D. DBP: ND BBP: ND DEHP:ND DIBP: ND	Cd: 0.01%(100mg/kg) Pb: 0.1%(1000mg/kg) Hg: 0.1%(1000mg/kg) Cr ⁶⁺ : 0.1%(1000mg/kg) PBBs: 0.1%(1000mg/kg) PBDEs: 0.1%(1000mg/kg) DBP: 0.1%(1000mg/kg) BBP: 0.1%(1000mg/kg) DEHP: 0.1%(1000mg/kg) DIBP: 0.1%(1000mg/kg)	--
8-19	Multi-layer ceramic capacitor (Y5V 1206)	Cd: N.D. Pb: N.D. Hg: N.D. Cr ⁶⁺ : N.D. PBBs: N.D. PBDEs: N.D. DBP: ND BBP: ND DEHP:ND DIBP: ND	Cd: 0.01%(100mg/kg) Pb: 0.1%(1000mg/kg) Hg: 0.1%(1000mg/kg) Cr ⁶⁺ : 0.1%(1000mg/kg) PBBs: 0.1%(1000mg/kg) PBDEs: 0.1%(1000mg/kg) DBP: 0.1%(1000mg/kg) BBP: 0.1%(1000mg/kg) DEHP: 0.1%(1000mg/kg) DIBP: 0.1%(1000mg/kg)	--
8-20	General purpose chip resistors (RC0201)	Cd: N.D. Pb: N.D. Hg: N.D. Cr ⁶⁺ : N.D. PBBs: N.D. PBDEs: N.D. DBP: ND BBP: ND DEHP:ND DIBP: ND	Cd: 0.01%(100mg/kg) Pb: 0.1%(1000mg/kg) Hg: 0.1%(1000mg/kg) Cr ⁶⁺ : 0.1%(1000mg/kg) PBBs: 0.1%(1000mg/kg) PBDEs: 0.1%(1000mg/kg) DBP: 0.1%(1000mg/kg) BBP: 0.1%(1000mg/kg) DEHP: 0.1%(1000mg/kg) DIBP: 0.1%(1000mg/kg)	--
8-21	General purpose chip resistors (RC0603)	Cd: N.D. Pb: N.D. Hg: N.D.	Cd: 0.01%(100mg/kg) Pb: 0.1%(1000mg/kg) Hg: 0.1%(1000mg/kg)	--

		Cr ⁶⁺ : N.D. PBBs: N.D. PBDEs: N.D. DBP: ND BBP: ND DEHP:ND DIBP: ND	Cr ⁶⁺ : 0.1%(1000mg/kg) PBBs: 0.1%(1000mg/kg) PBDEs: 0.1%(1000mg/kg) DBP: 0.1%(1000mg/kg) BBP: 0.1%(1000mg/kg) DEHP: 0.1%(1000mg/kg) DIBP: 0.1%(1000mg/kg)	
8-22	General purpose chip resistors (RC0805)	Cd: N.D. Pb: N.D. Hg: N.D. Cr ⁶⁺ : N.D. PBBs: N.D. PBDEs: N.D. DBP: ND BBP: ND DEHP:ND DIBP: ND	Cd: 0.01%(100mg/kg) Pb: 0.1%(1000mg/kg) Hg: 0.1%(1000mg/kg) Cr ⁶⁺ : 0.1%(1000mg/kg) PBBs: 0.1%(1000mg/kg) PBDEs: 0.1%(1000mg/kg) DBP: 0.1%(1000mg/kg) BBP: 0.1%(1000mg/kg) DEHP: 0.1%(1000mg/kg) DIBP: 0.1%(1000mg/kg)	--
8-23	General purpose chip resistors (RC1206)	Cd: N.D. Pb: N.D. Hg: N.D. Cr ⁶⁺ : N.D. PBBs: N.D. PBDEs: N.D. DBP: ND BBP: ND DEHP:ND DIBP: ND	Cd: 0.01%(100mg/kg) Pb: 0.1%(1000mg/kg) Hg: 0.1%(1000mg/kg) Cr ⁶⁺ : 0.1%(1000mg/kg) PBBs: 0.1%(1000mg/kg) PBDEs: 0.1%(1000mg/kg) DBP: 0.1%(1000mg/kg) BBP: 0.1%(1000mg/kg) DEHP: 0.1%(1000mg/kg) DIBP: 0.1%(1000mg/kg)	--
9	Chip			
9-1	PCB	Cd: N.D. Pb: N.D. Hg: N.D. Cr ⁶⁺ : N.D. PBBs: N.D. PBDEs: N.D. DBP: ND BBP: ND DEHP:ND DIBP: ND	Cd: 0.01%(100mg/kg) Pb: 0.1%(1000mg/kg) Hg: 0.1%(1000mg/kg) Cr ⁶⁺ : 0.1%(1000mg/kg) PBBs: 0.1%(1000mg/kg) PBDEs: 0.1%(1000mg/kg) DBP: 0.1%(1000mg/kg) BBP: 0.1%(1000mg/kg) DEHP: 0.1%(1000mg/kg) DIBP: 0.1%(1000mg/kg)	--
9-2	Nature	Cd: N.D. Pb: N.D. Hg: N.D. Cr ⁶⁺ : N.D.	Cd: 0.01%(100mg/kg) Pb: 0.1%(1000mg/kg) Hg: 0.1%(1000mg/kg) Cr ⁶⁺ : 0.1%(1000mg/kg)	--

		PBBs: N.D. PBDEs: N.D. DBP: ND BBP: ND DEHP:ND DIBP: ND	PBBs: 0.1%(1000mg/kg) PBDEs: 0.1%(1000mg/kg) DBP: 0.1%(1000mg/kg) BBP: 0.1%(1000mg/kg) DEHP: 0.1%(1000mg/kg) DIBP: 0.1%(1000mg/kg)	
9-3	Multilayer ceramic capacitors	Cd: N.D. Pb: N.D. Hg: N.D. Cr ⁶⁺ : N.D. PBBs: N.D. PBDEs: N.D. DBP: ND BBP: ND DEHP:ND DIBP: ND	Cd: 0.01%(100mg/kg) Pb: 0.1%(1000mg/kg) Hg: 0.1%(1000mg/kg) Cr ⁶⁺ : 0.1%(1000mg/kg) PBBs: 0.1%(1000mg/kg) PBDEs: 0.1%(1000mg/kg) DBP: 0.1%(1000mg/kg) BBP: 0.1%(1000mg/kg) DEHP: 0.1%(1000mg/kg) DIBP: 0.1%(1000mg/kg)	--
9-4	Chip resistors	Cd: N.D. Pb: N.D. Hg: N.D. Cr ⁶⁺ : N.D. PBBs: N.D. PBDEs: N.D. DBP: ND BBP: ND DEHP:ND DIBP: ND	Cd: 0.01%(100mg/kg) Pb: 0.1%(1000mg/kg) Hg: 0.1%(1000mg/kg) Cr ⁶⁺ : 0.1%(1000mg/kg) PBBs: 0.1%(1000mg/kg) PBDEs: 0.1%(1000mg/kg) DBP: 0.1%(1000mg/kg) BBP: 0.1%(1000mg/kg) DEHP: 0.1%(1000mg/kg) DIBP: 0.1%(1000mg/kg)	--
9-5	SMD Diode	Cd: N.D. Pb: N.D. Hg: N.D. Cr ⁶⁺ : N.D. PBBs: N.D. PBDEs: N.D. DBP: ND BBP: ND DEHP:ND DIBP: ND	Cd: 0.01%(100mg/kg) Pb: 0.1%(1000mg/kg) Hg: 0.1%(1000mg/kg) Cr ⁶⁺ : 0.1%(1000mg/kg) PBBs: 0.1%(1000mg/kg) PBDEs: 0.1%(1000mg/kg) DBP: 0.1%(1000mg/kg) BBP: 0.1%(1000mg/kg) DEHP: 0.1%(1000mg/kg) DIBP: 0.1%(1000mg/kg)	--
9-6	SMD Transistor	Cd: N.D. Pb: N.D. Hg: N.D. Cr ⁶⁺ : N.D. PBBs: N.D. PBDEs: N.D. DBP: ND	Cd: 0.01%(100mg/kg) Pb: 0.1%(1000mg/kg) Hg: 0.1%(1000mg/kg) Cr ⁶⁺ : 0.1%(1000mg/kg) PBBs: 0.1%(1000mg/kg) PBDEs: 0.1%(1000mg/kg) DBP: 0.1%(1000mg/kg)	--

		BBP: ND DEHP:ND DIBP: ND	BBP: 0.1%(1000mg/kg) DEHP: 0.1%(1000mg/kg) DIBP: 0.1%(1000mg/kg)	
9-7	Blue body w/ silvery metal pin (mixed)	Cd: N.D. Pb: N.D. Hg: N.D. Cr ⁶⁺ : N.D. PBBs: N.D. PBDEs: N.D. DBP: ND BBP: ND DEHP:ND DIBP: ND	Cd: 0.01%(100mg/kg) Pb: 0.1%(1000mg/kg) Hg: 0.1%(1000mg/kg) Cr ⁶⁺ : 0.1%(1000mg/kg) PBBs: 0.1%(1000mg/kg) PBDEs: 0.1%(1000mg/kg) DBP: 0.1%(1000mg/kg) BBP: 0.1%(1000mg/kg) DEHP: 0.1%(1000mg/kg) DIBP: 0.1%(1000mg/kg)	--
9-8	Aluminum electrolytic capacitor			
9-8-1	Black plastic w/ white printing	Cd: N.D. Pb: N.D. Hg: N.D. Cr ⁶⁺ : N.D. PBBs: N.D. PBDEs: N.D. DBP: ND BBP: ND DEHP:ND DIBP: ND	Cd: 0.01%(100mg/kg) Pb: 0.1%(1000mg/kg) Hg: 0.1%(1000mg/kg) Cr ⁶⁺ : 0.1%(1000mg/kg) PBBs: 0.1%(1000mg/kg) PBDEs: 0.1%(1000mg/kg) DBP: 0.1%(1000mg/kg) BBP: 0.1%(1000mg/kg) DEHP: 0.1%(1000mg/kg) DIBP: 0.1%(1000mg/kg)	--
9-8-2	Black rubber	Cd: N.D. Pb: N.D. Hg: N.D. Cr ⁶⁺ : N.D. PBBs: N.D. PBDEs: N.D. DBP: ND BBP: ND DEHP:ND DIBP: ND	Cd: 0.01%(100mg/kg) Pb: 0.1%(1000mg/kg) Hg: 0.1%(1000mg/kg) Cr ⁶⁺ : 0.1%(1000mg/kg) PBBs: 0.1%(1000mg/kg) PBDEs: 0.1%(1000mg/kg) DBP: 0.1%(1000mg/kg) BBP: 0.1%(1000mg/kg) DEHP: 0.1%(1000mg/kg) DIBP: 0.1%(1000mg/kg)	--
9-8-3	Brown paper w/ liquid	Cd: N.D. Pb: N.D. Hg: N.D. Cr ⁶⁺ : N.D. PBBs: N.D. PBDEs: N.D. DBP: ND BBP: ND	Cd: 0.01%(100mg/kg) Pb: 0.1%(1000mg/kg) Hg: 0.1%(1000mg/kg) Cr ⁶⁺ : 0.1%(1000mg/kg) PBBs: 0.1%(1000mg/kg) PBDEs: 0.1%(1000mg/kg) DBP: 0.1%(1000mg/kg) BBP: 0.1%(1000mg/kg)	--

		DEHP:ND DIBP: ND	DEHP: 0.1%(1000mg/kg) DIBP: 0.1%(1000mg/kg)	
9-8-4	Grey foil	Cd: N.D. Pb: N.D. Hg: N.D. Cr ⁶⁺ : N.D. PBBs: N.D. PBDEs: N.D. DBP: ND BBP: ND DEHP:ND DIBP: ND	Cd: 0.01%(100mg/kg) Pb: 0.1%(1000mg/kg) Hg: 0.1%(1000mg/kg) Cr ⁶⁺ : 0.1%(1000mg/kg) PBBs: 0.1%(1000mg/kg) PBDEs: 0.1%(1000mg/kg) DBP: 0.1%(1000mg/kg) BBP: 0.1%(1000mg/kg) DEHP: 0.1%(1000mg/kg) DIBP: 0.1%(1000mg/kg)	--
9-8-5	Silver-gray foil	Cd: N.D. Pb: N.D. Hg: N.D. Cr ⁶⁺ : N.D. PBBs: N.D. PBDEs: N.D. DBP: ND BBP: ND DEHP:ND DIBP: ND	Cd: 0.01%(100mg/kg) Pb: 0.1%(1000mg/kg) Hg: 0.1%(1000mg/kg) Cr ⁶⁺ : 0.1%(1000mg/kg) PBBs: 0.1%(1000mg/kg) PBDEs: 0.1%(1000mg/kg) DBP: 0.1%(1000mg/kg) BBP: 0.1%(1000mg/kg) DEHP: 0.1%(1000mg/kg) DIBP: 0.1%(1000mg/kg)	--
9-8-6	Silvery metal shell	Cd: N.D. Pb: N.D. Hg: N.D. Cr ⁶⁺ : N.D. PBBs: N.D. PBDEs: N.D. DBP: ND BBP: ND DEHP:ND DIBP: ND	Cd: 0.01%(100mg/kg) Pb: 0.1%(1000mg/kg) Hg: 0.1%(1000mg/kg) Cr ⁶⁺ : 0.1%(1000mg/kg) PBBs: 0.1%(1000mg/kg) PBDEs: 0.1%(1000mg/kg) DBP: 0.1%(1000mg/kg) BBP: 0.1%(1000mg/kg) DEHP: 0.1%(1000mg/kg) DIBP: 0.1%(1000mg/kg)	--
9-8-7	Silvery metal plate	Cd: N.D. Pb: N.D. Hg: N.D. Cr ⁶⁺ : N.D. PBBs: N.D. PBDEs: N.D. DBP: ND BBP: ND DEHP:ND DIBP: ND	Cd: 0.01%(100mg/kg) Pb: 0.1%(1000mg/kg) Hg: 0.1%(1000mg/kg) Cr ⁶⁺ : 0.1%(1000mg/kg) PBBs: 0.1%(1000mg/kg) PBDEs: 0.1%(1000mg/kg) DBP: 0.1%(1000mg/kg) BBP: 0.1%(1000mg/kg) DEHP: 0.1%(1000mg/kg) DIBP: 0.1%(1000mg/kg)	--

Shenzhen Most Technology Service Co., Limited

No.5, Nangshan 2th Rd., North Hi-Tech Industrial park, Nanshan Shenzhen Guangdong, China

Tel:(86) 755-86026850

Http:// www.szmost.com

Report No.: MTHN19070127

Fax:(86) 755-26013350

Email: szmost@szmost.com

9-8-8	Silvery metal pin	Cd: N.D. Pb: N.D. Hg: N.D. Cr ⁶⁺ : N.D. PBBs: N.D. PBDEs: N.D. DBP: ND BBP: ND DEHP:ND DIBP: ND	Cd: 0.01%(100mg/kg) Pb: 0.1%(1000mg/kg) Hg: 0.1%(1000mg/kg) Cr ⁶⁺ : 0.1%(1000mg/kg) PBBs: 0.1%(1000mg/kg) PBDEs: 0.1%(1000mg/kg) DBP: 0.1%(1000mg/kg) BBP: 0.1%(1000mg/kg) DEHP: 0.1%(1000mg/kg) DIBP: 0.1%(1000mg/kg)	--
9-9	Color ring inductance	Cd: N.D. Pb: N.D. Hg: N.D. Cr ⁶⁺ : N.D. PBBs: N.D. PBDEs: N.D. DBP: ND BBP: ND DEHP:ND DIBP: ND	Cd: 0.01%(100mg/kg) Pb: 0.1%(1000mg/kg) Hg: 0.1%(1000mg/kg) Cr ⁶⁺ : 0.1%(1000mg/kg) PBBs: 0.1%(1000mg/kg) PBDEs: 0.1%(1000mg/kg) DBP: 0.1%(1000mg/kg) BBP: 0.1%(1000mg/kg) DEHP: 0.1%(1000mg/kg) DIBP: 0.1%(1000mg/kg)	--
9-10	Carbon film resistors	Cd: N.D. Pb: N.D. Hg: N.D. Cr ⁶⁺ : N.D. PBBs: N.D. PBDEs: N.D. DBP: ND BBP: ND DEHP:ND DIBP: ND	Cd: 0.01%(100mg/kg) Pb: 0.1%(1000mg/kg) Hg: 0.1%(1000mg/kg) Cr ⁶⁺ : 0.1%(1000mg/kg) PBBs: 0.1%(1000mg/kg) PBDEs: 0.1%(1000mg/kg) DBP: 0.1%(1000mg/kg) BBP: 0.1%(1000mg/kg) DEHP: 0.1%(1000mg/kg) DIBP: 0.1%(1000mg/kg)	--
9-11	Ceramic capacitors	Cd: N.D. Pb: N.D. Hg: N.D. Cr ⁶⁺ : N.D. PBBs: N.D. PBDEs: N.D. DBP: ND BBP: ND DEHP:ND DIBP: ND	Cd: 0.01%(100mg/kg) Pb: 0.1%(1000mg/kg) Hg: 0.1%(1000mg/kg) Cr ⁶⁺ : 0.1%(1000mg/kg) PBBs: 0.1%(1000mg/kg) PBDEs: 0.1%(1000mg/kg) DBP: 0.1%(1000mg/kg) BBP: 0.1%(1000mg/kg) DEHP: 0.1%(1000mg/kg) DIBP: 0.1%(1000mg/kg)	--
9-12	Ceramic capacitors	Cd: N.D. Pb: N.D. Hg: N.D.	Cd: 0.01%(100mg/kg) Pb: 0.1%(1000mg/kg) Hg: 0.1%(1000mg/kg)	--

Shenzhen Most Technology Service Co., Limited

No.5, Nangshan 2th Rd., North Hi-Tech Industrial park, Nanshan Shenzhen Guangdong, China

Tel:(86) 755-86026850

Http:// www.szmost.com

Report No.: MTHN19070127

China

Fax:(86) 755-26013350

Email: szmost@szmost.com

		Cr ⁶⁺ : N.D. PBBs: N.D. PBDEs: N.D. DBP: ND BBP: ND DEHP:ND DIBP: ND	Cr ⁶⁺ : 0.1%(1000mg/kg) PBBs: 0.1%(1000mg/kg) PBDEs: 0.1%(1000mg/kg) DBP: 0.1%(1000mg/kg) BBP: 0.1%(1000mg/kg) DEHP: 0.1%(1000mg/kg) DIBP: 0.1%(1000mg/kg)	
9-13	Chip beads	Cd: N.D. Pb: N.D. Hg: N.D. Cr ⁶⁺ : N.D. PBBs: N.D. PBDEs: N.D. DBP: ND BBP: ND DEHP:ND DIBP: ND	Cd: 0.01%(100mg/kg) Pb: 0.1%(1000mg/kg) Hg: 0.1%(1000mg/kg) Cr ⁶⁺ : 0.1%(1000mg/kg) PBBs: 0.1%(1000mg/kg) PBDEs: 0.1%(1000mg/kg) DBP: 0.1%(1000mg/kg) BBP: 0.1%(1000mg/kg) DEHP: 0.1%(1000mg/kg) DIBP: 0.1%(1000mg/kg)	--
9-14	Power inductors	Cd: N.D. Pb: N.D. Hg: N.D. Cr ⁶⁺ : N.D. PBBs: N.D. PBDEs: N.D. DBP: ND BBP: ND DEHP:ND DIBP: ND	Cd: 0.01%(100mg/kg) Pb: 0.1%(1000mg/kg) Hg: 0.1%(1000mg/kg) Cr ⁶⁺ : 0.1%(1000mg/kg) PBBs: 0.1%(1000mg/kg) PBDEs: 0.1%(1000mg/kg) DBP: 0.1%(1000mg/kg) BBP: 0.1%(1000mg/kg) DEHP: 0.1%(1000mg/kg) DIBP: 0.1%(1000mg/kg)	--
9-13	Power inductors	Cd: N.D. Pb: N.D. Hg: N.D. Cr ⁶⁺ : N.D. PBBs: N.D. PBDEs: N.D. DBP: ND BBP: ND DEHP:ND DIBP: ND	Cd: 0.01%(100mg/kg) Pb: 0.1%(1000mg/kg) Hg: 0.1%(1000mg/kg) Cr ⁶⁺ : 0.1%(1000mg/kg) PBBs: 0.1%(1000mg/kg) PBDEs: 0.1%(1000mg/kg) DBP: 0.1%(1000mg/kg) BBP: 0.1%(1000mg/kg) DEHP: 0.1%(1000mg/kg) DIBP: 0.1%(1000mg/kg)	--
9-15	Blue body w/ silver-gray metal pin (Varistor)	Cd: N.D. Pb: N.D. Hg: N.D. Cr ⁶⁺ : N.D. PBBs: N.D. PBDEs: N.D.	Cd: 0.01%(100mg/kg) Pb: 0.1%(1000mg/kg) Hg: 0.1%(1000mg/kg) Cr ⁶⁺ : 0.1%(1000mg/kg) PBBs: 0.1%(1000mg/kg) PBDEs: 0.1%(1000mg/kg)	--

		DBP: ND BBP: ND DEHP:ND DIBP: ND	DBP: 0.1%(1000mg/kg) BBP: 0.1%(1000mg/kg) DEHP: 0.1%(1000mg/kg) DIBP: 0.1%(1000mg/kg)	
10-1	Silver body	Cd: N.D. Pb: N.D. Hg: N.D. Cr ⁶⁺ : N.D. PBBs: N.D. PBDEs: N.D. DBP: ND BBP: ND DEHP:ND DIBP: ND	Cd: 0.01%(100mg/kg) Pb: 0.1%(1000mg/kg) Hg: 0.1%(1000mg/kg) Cr ⁶⁺ : 0.1%(1000mg/kg) PBBs: 0.1%(1000mg/kg) PBDEs: 0.1%(1000mg/kg) DBP: 0.1%(1000mg/kg) BBP: 0.1%(1000mg/kg) DEHP: 0.1%(1000mg/kg) DIBP: 0.1%(1000mg/kg)	--
10-2	Laminate	Cd: N.D. Pb: N.D. Hg: N.D. Cr ⁶⁺ : N.D. PBBs: N.D. PBDEs: N.D. DBP: ND BBP: ND DEHP:ND DIBP: ND	Cd: 0.01%(100mg/kg) Pb: 0.1%(1000mg/kg) Hg: 0.1%(1000mg/kg) Cr ⁶⁺ : 0.1%(1000mg/kg) PBBs: 0.1%(1000mg/kg) PBDEs: 0.1%(1000mg/kg) DBP: 0.1%(1000mg/kg) BBP: 0.1%(1000mg/kg) DEHP: 0.1%(1000mg/kg) DIBP: 0.1%(1000mg/kg)	--
10-3	Surface tin sheet	Cd: N.D. Pb: N.D. Hg: N.D. Cr ⁶⁺ : N.D. PBBs: N.D. PBDEs: N.D. DBP: ND BBP: ND DEHP:ND DIBP: ND	Cd: 0.01%(100mg/kg) Pb: 0.1%(1000mg/kg) Hg: 0.1%(1000mg/kg) Cr ⁶⁺ : 0.1%(1000mg/kg) PBBs: 0.1%(1000mg/kg) PBDEs: 0.1%(1000mg/kg) DBP: 0.1%(1000mg/kg) BBP: 0.1%(1000mg/kg) DEHP: 0.1%(1000mg/kg) DIBP: 0.1%(1000mg/kg)	--
10-4	Surface silver sheet	Cd: N.D. Pb: N.D. Hg: N.D. Cr ⁶⁺ : N.D. PBBs: N.D. PBDEs: N.D. DBP: ND BBP: ND DEHP:ND	Cd: 0.01%(100mg/kg) Pb: 0.1%(1000mg/kg) Hg: 0.1%(1000mg/kg) Cr ⁶⁺ : 0.1%(1000mg/kg) PBBs: 0.1%(1000mg/kg) PBDEs: 0.1%(1000mg/kg) DBP: 0.1%(1000mg/kg) BBP: 0.1%(1000mg/kg) DEHP: 0.1%(1000mg/kg)	--

		DIBP: ND	DIBP: 0.1%(1000mg/kg)	
11-1	Silvery/golden plated metal (Terminal)	Cd: N.D. Pb: N.D. Hg: N.D. Cr ⁶⁺ : N.D. PBBs: N.D. PBDEs: N.D. DBP: ND BBP: ND DEHP:ND DIBP: ND	Cd: 0.01%(100mg/kg) Pb: 0.1%(1000mg/kg) Hg: 0.1%(1000mg/kg) Cr ⁶⁺ : 0.1%(1000mg/kg) PBBs: 0.1%(1000mg/kg) PBDEs: 0.1%(1000mg/kg) DBP: 0.1%(1000mg/kg) BBP: 0.1%(1000mg/kg) DEHP: 0.1%(1000mg/kg) DIBP: 0.1%(1000mg/kg)	--
11-2	Silver-grey plated metal (Nickel)	Cd: N.D. Pb: N.D. Hg: N.D. Cr ⁶⁺ : N.D. PBBs: N.D. PBDEs: N.D. DBP: ND BBP: ND DEHP:ND DIBP: ND	Cd: 0.01%(100mg/kg) Pb: 0.1%(1000mg/kg) Hg: 0.1%(1000mg/kg) Cr ⁶⁺ : 0.1%(1000mg/kg) PBBs: 0.1%(1000mg/kg) PBDEs: 0.1%(1000mg/kg) DBP: 0.1%(1000mg/kg) BBP: 0.1%(1000mg/kg) DEHP: 0.1%(1000mg/kg) DIBP: 0.1%(1000mg/kg)	--
11-3	Silver	Cd: N.D. Pb: N.D. Hg: N.D. Cr ⁶⁺ : N.D. PBBs: N.D. PBDEs: N.D. DBP: ND BBP: ND DEHP:ND DIBP: ND	Cd: 0.01%(100mg/kg) Pb: 0.1%(1000mg/kg) Hg: 0.1%(1000mg/kg) Cr ⁶⁺ : 0.1%(1000mg/kg) PBBs: 0.1%(1000mg/kg) PBDEs: 0.1%(1000mg/kg) DBP: 0.1%(1000mg/kg) BBP: 0.1%(1000mg/kg) DEHP: 0.1%(1000mg/kg) DIBP: 0.1%(1000mg/kg)	--
11-4-1	Black plastic grains	Cd: N.D. Pb: N.D. Hg: N.D. Cr ⁶⁺ : N.D. PBBs: N.D. PBDEs: N.D. DBP: ND BBP: ND DEHP:ND DIBP: ND	Cd: 0.01%(100mg/kg) Pb: 0.1%(1000mg/kg) Hg: 0.1%(1000mg/kg) Cr ⁶⁺ : 0.1%(1000mg/kg) PBBs: 0.1%(1000mg/kg) PBDEs: 0.1%(1000mg/kg) DBP: 0.1%(1000mg/kg) BBP: 0.1%(1000mg/kg) DEHP: 0.1%(1000mg/kg) DIBP: 0.1%(1000mg/kg)	--

11-4-2	White plastic grains	Cd: N.D. Pb: N.D. Hg: N.D. Cr ⁶⁺ : N.D. PBBs: N.D. PBDEs: N.D. DBP: ND BBP: ND DEHP:ND DIBP: ND	Cd: 0.01%(100mg/kg) Pb: 0.1%(1000mg/kg) Hg: 0.1%(1000mg/kg) Cr ⁶⁺ : 0.1%(1000mg/kg) PBBs: 0.1%(1000mg/kg) PBDEs: 0.1%(1000mg/kg) DBP: 0.1%(1000mg/kg) BBP: 0.1%(1000mg/kg) DEHP: 0.1%(1000mg/kg) DIBP: 0.1%(1000mg/kg)	--
11-4-3	White plastic grains	Cd: N.D. Pb: N.D. Hg: N.D. Cr ⁶⁺ : N.D. PBBs: N.D. PBDEs: N.D. DBP: ND BBP: ND DEHP:ND DIBP: ND	Cd: 0.01%(100mg/kg) Pb: 0.1%(1000mg/kg) Hg: 0.1%(1000mg/kg) Cr ⁶⁺ : 0.1%(1000mg/kg) PBBs: 0.1%(1000mg/kg) PBDEs: 0.1%(1000mg/kg) DBP: 0.1%(1000mg/kg) BBP: 0.1%(1000mg/kg) DEHP: 0.1%(1000mg/kg) DIBP: 0.1%(1000mg/kg)	--
11-4-4	Cupreous metal (Brass)	Cd: N.D. Pb: N.D. Hg: N.D. Cr ⁶⁺ : N.D. PBBs: N.D. PBDEs: N.D. DBP: ND BBP: ND DEHP:ND DIBP: ND	Cd: 0.01%(100mg/kg) Pb: 0.1%(1000mg/kg) Hg: 0.1%(1000mg/kg) Cr ⁶⁺ : 0.1%(1000mg/kg) PBBs: 0.1%(1000mg/kg) PBDEs: 0.1%(1000mg/kg) DBP: 0.1%(1000mg/kg) BBP: 0.1%(1000mg/kg) DEHP: 0.1%(1000mg/kg) DIBP: 0.1%(1000mg/kg)	--
11-4-5	Phosphor Copper	Cd: N.D. Pb: N.D. Hg: N.D. Cr ⁶⁺ : N.D. PBBs: N.D. PBDEs: N.D. DBP: ND BBP: ND DEHP:ND DIBP: ND	Cd: 0.01%(100mg/kg) Pb: 0.1%(1000mg/kg) Hg: 0.1%(1000mg/kg) Cr ⁶⁺ : 0.1%(1000mg/kg) PBBs: 0.1%(1000mg/kg) PBDEs: 0.1%(1000mg/kg) DBP: 0.1%(1000mg/kg) BBP: 0.1%(1000mg/kg) DEHP: 0.1%(1000mg/kg) DIBP: 0.1%(1000mg/kg)	--
11-4-6	Manganese steel	Cd: N.D. Pb: N.D. Hg: N.D.	Cd: 0.01%(100mg/kg) Pb: 0.1%(1000mg/kg) Hg: 0.1%(1000mg/kg)	--

Shenzhen Most Technology Service Co., Limited

No.5, Nangshan 2th Rd., North Hi-Tech Industrial park, Nanshan Shenzhen Guangdong, China

Tel:(86) 755-86026850

Http:// www.szmost.com

Report No.: MTHN19070127

Fax:(86) 755-26013350

Email: szmost@szmost.com

		Cr ⁶⁺ : N.D. PBBs: N.D. PBDEs: N.D. DBP: ND BBP: ND DEHP:ND DIBP: ND	Cr ⁶⁺ : 0.1%(1000mg/kg) PBBs: 0.1%(1000mg/kg) PBDEs: 0.1%(1000mg/kg) DBP: 0.1%(1000mg/kg) BBP: 0.1%(1000mg/kg) DEHP: 0.1%(1000mg/kg) DIBP: 0.1%(1000mg/kg)	
11-4-7	Phosphor Copper	Cd: N.D. Pb: N.D. Hg: N.D. Cr ⁶⁺ : N.D. PBBs: N.D. PBDEs: N.D. DBP: ND BBP: ND DEHP:ND DIBP: ND	Cd: 0.01%(100mg/kg) Pb: 0.1%(1000mg/kg) Hg: 0.1%(1000mg/kg) Cr ⁶⁺ : 0.1%(1000mg/kg) PBBs: 0.1%(1000mg/kg) PBDEs: 0.1%(1000mg/kg) DBP: 0.1%(1000mg/kg) BBP: 0.1%(1000mg/kg) DEHP: 0.1%(1000mg/kg) DIBP: 0.1%(1000mg/kg)	--
11-4-8	Beryllium bronze	Cd: N.D. Pb: N.D. Hg: N.D. Cr ⁶⁺ : N.D. PBBs: N.D. PBDEs: N.D. DBP: ND BBP: ND DEHP:ND DIBP: ND	Cd: 0.01%(100mg/kg) Pb: 0.1%(1000mg/kg) Hg: 0.1%(1000mg/kg) Cr ⁶⁺ : 0.1%(1000mg/kg) PBBs: 0.1%(1000mg/kg) PBDEs: 0.1%(1000mg/kg) DBP: 0.1%(1000mg/kg) BBP: 0.1%(1000mg/kg) DEHP: 0.1%(1000mg/kg) DIBP: 0.1%(1000mg/kg)	--
12	Black plastic tube w/ white printing	Cd: N.D. Pb: N.D. Hg: N.D. Cr ⁶⁺ : N.D. PBBs: N.D. PBDEs: N.D. DBP: ND BBP: ND DEHP:ND DIBP: ND	Cd: 0.01%(100mg/kg) Pb: 0.1%(1000mg/kg) Hg: 0.1%(1000mg/kg) Cr ⁶⁺ : 0.1%(1000mg/kg) PBBs: 0.1%(1000mg/kg) PBDEs: 0.1%(1000mg/kg) DBP: 0.1%(1000mg/kg) BBP: 0.1%(1000mg/kg) DEHP: 0.1%(1000mg/kg) DIBP: 0.1%(1000mg/kg)	--
13	Silver metal	Cd: N.D. Pb: N.D. Hg: N.D. Cr ⁶⁺ : N.D. PBBs: N.D. PBDEs: N.D.	Cd: 0.01%(100mg/kg) Pb: 0.1%(1000mg/kg) Hg: 0.1%(1000mg/kg) Cr ⁶⁺ : 0.1%(1000mg/kg) PBBs: 0.1%(1000mg/kg) PBDEs: 0.1%(1000mg/kg)	--

		DBP: ND BBP: ND DEHP:ND DIBP: ND	DBP: 0.1%(1000mg/kg) BBP: 0.1%(1000mg/kg) DEHP: 0.1%(1000mg/kg) DIBP: 0.1%(1000mg/kg)	
14	Mixed	Cd: N.D. Pb: N.D. Hg: N.D. Cr ⁶⁺ : N.D. PBBs: N.D. PBDEs: N.D. DBP: ND BBP: ND DEHP:ND DIBP: ND	Cd: 0.01%(100mg/kg) Pb: 0.1%(1000mg/kg) Hg: 0.1%(1000mg/kg) Cr ⁶⁺ : 0.1%(1000mg/kg) PBBs: 0.1%(1000mg/kg) PBDEs: 0.1%(1000mg/kg) DBP: 0.1%(1000mg/kg) BBP: 0.1%(1000mg/kg) DEHP: 0.1%(1000mg/kg) DIBP: 0.1%(1000mg/kg)	--
15	Black plastic	Cd: N.D. Pb: N.D. Hg: N.D. Cr ⁶⁺ : N.D. PBBs: N.D. PBDEs: N.D. DBP: ND BBP: ND DEHP:ND DIBP: ND	Cd: 0.01%(100mg/kg) Pb: 0.1%(1000mg/kg) Hg: 0.1%(1000mg/kg) Cr ⁶⁺ : 0.1%(1000mg/kg) PBBs: 0.1%(1000mg/kg) PBDEs: 0.1%(1000mg/kg) DBP: 0.1%(1000mg/kg) BBP: 0.1%(1000mg/kg) DEHP: 0.1%(1000mg/kg) DIBP: 0.1%(1000mg/kg)	--
16	Black palstic	Cd: N.D. Pb: N.D. Hg: N.D. Cr ⁶⁺ : N.D. PBBs: N.D. PBDEs: N.D. DBP: ND BBP: ND DEHP:ND DIBP: ND	Cd: 0.01%(100mg/kg) Pb: 0.1%(1000mg/kg) Hg: 0.1%(1000mg/kg) Cr ⁶⁺ : 0.1%(1000mg/kg) PBBs: 0.1%(1000mg/kg) PBDEs: 0.1%(1000mg/kg) DBP: 0.1%(1000mg/kg) BBP: 0.1%(1000mg/kg) DEHP: 0.1%(1000mg/kg) DIBP: 0.1%(1000mg/kg)	--
17-1	Brassy metal sheet (C2680)	Cd: N.D. Pb: N.D. Hg: N.D. Cr ⁶⁺ : N.D. PBBs: N.D. PBDEs: N.D. DBP: ND BBP: ND DEHP:ND	Cd: 0.01%(100mg/kg) Pb: 0.1%(1000mg/kg) Hg: 0.1%(1000mg/kg) Cr ⁶⁺ : 0.1%(1000mg/kg) PBBs: 0.1%(1000mg/kg) PBDEs: 0.1%(1000mg/kg) DBP: 0.1%(1000mg/kg) BBP: 0.1%(1000mg/kg) DEHP: 0.1%(1000mg/kg)	--

		DIBP: ND	DIBP: 0.1%(1000mg/kg)	
17-2	Copper-colored metal sheet (C5191)	Cd: N.D. Pb: N.D. Hg: N.D. Cr ⁶⁺ : N.D. PBBs: N.D. PBDEs: N.D. DBP: ND BBP: ND DEHP:ND DIBP: ND	Cd: 0.01%(100mg/kg) Pb: 0.1%(1000mg/kg) Hg: 0.1%(1000mg/kg) Cr ⁶⁺ : 0.1%(1000mg/kg) PBBs: 0.1%(1000mg/kg) PBDEs: 0.1%(1000mg/kg) DBP: 0.1%(1000mg/kg) BBP: 0.1%(1000mg/kg) DEHP: 0.1%(1000mg/kg) DIBP: 0.1%(1000mg/kg)	--
17-3	Black plastic grains	Cd: N.D. Pb: N.D. Hg: N.D. Cr ⁶⁺ : N.D. PBBs: N.D. PBDEs: N.D. DBP: ND BBP: ND DEHP:ND DIBP: ND	Cd: 0.01%(100mg/kg) Pb: 0.1%(1000mg/kg) Hg: 0.1%(1000mg/kg) Cr ⁶⁺ : 0.1%(1000mg/kg) PBBs: 0.1%(1000mg/kg) PBDEs: 0.1%(1000mg/kg) DBP: 0.1%(1000mg/kg) BBP: 0.1%(1000mg/kg) DEHP: 0.1%(1000mg/kg) DIBP: 0.1%(1000mg/kg)	--
17-4	Silvery/golden plated metal	Cd: N.D. Pb: N.D. Hg: N.D. Cr ⁶⁺ : N.D. PBBs: N.D. PBDEs: N.D. DBP: ND BBP: ND DEHP:ND DIBP: ND	Cd: 0.01%(100mg/kg) Pb: 0.1%(1000mg/kg) Hg: 0.1%(1000mg/kg) Cr ⁶⁺ : 0.1%(1000mg/kg) PBBs: 0.1%(1000mg/kg) PBDEs: 0.1%(1000mg/kg) DBP: 0.1%(1000mg/kg) BBP: 0.1%(1000mg/kg) DEHP: 0.1%(1000mg/kg) DIBP: 0.1%(1000mg/kg)	--
17-5	Silvery plating	Cd: N.D. Pb: N.D. Hg: N.D. Cr ⁶⁺ : N.D. PBBs: N.D. PBDEs: N.D. DBP: ND BBP: ND DEHP:ND DIBP: ND	Cd: 0.01%(100mg/kg) Pb: 0.1%(1000mg/kg) Hg: 0.1%(1000mg/kg) Cr ⁶⁺ : 0.1%(1000mg/kg) PBBs: 0.1%(1000mg/kg) PBDEs: 0.1%(1000mg/kg) DBP: 0.1%(1000mg/kg) BBP: 0.1%(1000mg/kg) DEHP: 0.1%(1000mg/kg) DIBP: 0.1%(1000mg/kg)	--

17-6	Silvery plated metal wire	Cd: N.D. Pb: N.D. Hg: N.D. Cr ⁶⁺ : N.D. PBBs: N.D. PBDEs: N.D. DBP: ND BBP: ND DEHP:ND DIBP: ND	Cd: 0.01%(100mg/kg) Pb: 0.1%(1000mg/kg) Hg: 0.1%(1000mg/kg) Cr ⁶⁺ : 0.1%(1000mg/kg) PBBs: 0.1%(1000mg/kg) PBDEs: 0.1%(1000mg/kg) DBP: 0.1%(1000mg/kg) BBP: 0.1%(1000mg/kg) DEHP: 0.1%(1000mg/kg) DIBP: 0.1%(1000mg/kg)	--
17-7	Silvery plated metal wire	Cd: N.D. Pb: N.D. Hg: N.D. Cr ⁶⁺ : N.D. PBBs: N.D. PBDEs: N.D. DBP: ND BBP: ND DEHP:ND DIBP: ND	Cd: 0.01%(100mg/kg) Pb: 0.1%(1000mg/kg) Hg: 0.1%(1000mg/kg) Cr ⁶⁺ : 0.1%(1000mg/kg) PBBs: 0.1%(1000mg/kg) PBDEs: 0.1%(1000mg/kg) DBP: 0.1%(1000mg/kg) BBP: 0.1%(1000mg/kg) DEHP: 0.1%(1000mg/kg) DIBP: 0.1%(1000mg/kg)	--
17-8	PVC	Cd: N.D. Pb: N.D. Hg: N.D. Cr ⁶⁺ : N.D. PBBs: N.D. PBDEs: N.D. DBP: ND BBP: ND DEHP:ND DIBP: ND	Cd: 0.01%(100mg/kg) Pb: 0.1%(1000mg/kg) Hg: 0.1%(1000mg/kg) Cr ⁶⁺ : 0.1%(1000mg/kg) PBBs: 0.1%(1000mg/kg) PBDEs: 0.1%(1000mg/kg) DBP: 0.1%(1000mg/kg) BBP: 0.1%(1000mg/kg) DEHP: 0.1%(1000mg/kg) DIBP: 0.1%(1000mg/kg)	--
17-9	Black plastic	Cd: N.D. Pb: N.D. Hg: N.D. Cr ⁶⁺ : N.D. PBBs: N.D. PBDEs: N.D. DBP: ND BBP: ND DEHP:ND DIBP: ND	Cd: 0.01%(100mg/kg) Pb: 0.1%(1000mg/kg) Hg: 0.1%(1000mg/kg) Cr ⁶⁺ : 0.1%(1000mg/kg) PBBs: 0.1%(1000mg/kg) PBDEs: 0.1%(1000mg/kg) DBP: 0.1%(1000mg/kg) BBP: 0.1%(1000mg/kg) DEHP: 0.1%(1000mg/kg) DIBP: 0.1%(1000mg/kg)	--
17-10	Black plastic grains (LCP)	Cd: N.D. Pb: N.D. Hg: N.D.	Cd: 0.01%(100mg/kg) Pb: 0.1%(1000mg/kg) Hg: 0.1%(1000mg/kg)	--

		Cr ⁶⁺ : N.D. PBBs: N.D. PBDEs: N.D. DBP: ND BBP: ND DEHP:ND DIBP: ND	Cr ⁶⁺ : 0.1%(1000mg/kg) PBBs: 0.1%(1000mg/kg) PBDEs: 0.1%(1000mg/kg) DBP: 0.1%(1000mg/kg) BBP: 0.1%(1000mg/kg) DEHP: 0.1%(1000mg/kg) DIBP: 0.1%(1000mg/kg)	
17-11	Black plastic pellets	Cd: N.D. Pb: N.D. Hg: N.D. Cr ⁶⁺ : N.D. PBBs: N.D. PBDEs: N.D. DBP: ND BBP: ND DEHP:ND DIBP: ND	Cd: 0.01%(100mg/kg) Pb: 0.1%(1000mg/kg) Hg: 0.1%(1000mg/kg) Cr ⁶⁺ : 0.1%(1000mg/kg) PBBs: 0.1%(1000mg/kg) PBDEs: 0.1%(1000mg/kg) DBP: 0.1%(1000mg/kg) BBP: 0.1%(1000mg/kg) DEHP: 0.1%(1000mg/kg) DIBP: 0.1%(1000mg/kg)	--
18	PCB			
18-1	Ink	Cd: N.D. Pb: N.D. Hg: N.D. Cr ⁶⁺ : N.D. PBBs: N.D. PBDEs: N.D. DBP: ND BBP: ND DEHP:ND DIBP: ND	Cd: 0.01%(100mg/kg) Pb: 0.1%(1000mg/kg) Hg: 0.1%(1000mg/kg) Cr ⁶⁺ : 0.1%(1000mg/kg) PBBs: 0.1%(1000mg/kg) PBDEs: 0.1%(1000mg/kg) DBP: 0.1%(1000mg/kg) BBP: 0.1%(1000mg/kg) DEHP: 0.1%(1000mg/kg) DIBP: 0.1%(1000mg/kg)	--
18-2	PCB	Cd: N.D. Pb: N.D. Hg: N.D. Cr ⁶⁺ : N.D. PBBs: N.D. PBDEs: N.D. DBP: ND BBP: ND DEHP:ND DIBP: ND	Cd: 0.01%(100mg/kg) Pb: 0.1%(1000mg/kg) Hg: 0.1%(1000mg/kg) Cr ⁶⁺ : 0.1%(1000mg/kg) PBBs: 0.1%(1000mg/kg) PBDEs: 0.1%(1000mg/kg) DBP: 0.1%(1000mg/kg) BBP: 0.1%(1000mg/kg) DEHP: 0.1%(1000mg/kg) DIBP: 0.1%(1000mg/kg)	--
18-3	Surface gold sheet (PCB)	Cd: N.D. Pb: N.D. Hg: N.D. Cr ⁶⁺ : N.D.	Cd: 0.01%(100mg/kg) Pb: 0.1%(1000mg/kg) Hg: 0.1%(1000mg/kg) Cr ⁶⁺ : 0.1%(1000mg/kg)	--

		PBBs: N.D. PBDEs: N.D. DBP: ND BBP: ND DEHP:ND DIBP: ND	PBBs: 0.1%(1000mg/kg) PBDEs: 0.1%(1000mg/kg) DBP: 0.1%(1000mg/kg) BBP: 0.1%(1000mg/kg) DEHP: 0.1%(1000mg/kg) DIBP: 0.1%(1000mg/kg)	
18-4	Yellow solid sheet (Laminate)	Cd: N.D. Pb: N.D. Hg: N.D. Cr ⁶⁺ : N.D. PBBs: N.D. PBDEs: N.D. DBP: ND BBP: ND DEHP:ND DIBP: ND	Cd: 0.01%(100mg/kg) Pb: 0.1%(1000mg/kg) Hg: 0.1%(1000mg/kg) Cr ⁶⁺ : 0.1%(1000mg/kg) PBBs: 0.1%(1000mg/kg) PBDEs: 0.1%(1000mg/kg) DBP: 0.1%(1000mg/kg) BBP: 0.1%(1000mg/kg) DEHP: 0.1%(1000mg/kg) DIBP: 0.1%(1000mg/kg)	--
19-1	Golden plated metal sheet	Cd: N.D. Pb: N.D. Hg: N.D. Cr ⁶⁺ : N.D. PBBs: N.D. PBDEs: N.D. DBP: ND BBP: ND DEHP:ND DIBP: ND	Cd: 0.01%(100mg/kg) Pb: 0.1%(1000mg/kg) Hg: 0.1%(1000mg/kg) Cr ⁶⁺ : 0.1%(1000mg/kg) PBBs: 0.1%(1000mg/kg) PBDEs: 0.1%(1000mg/kg) DBP: 0.1%(1000mg/kg) BBP: 0.1%(1000mg/kg) DEHP: 0.1%(1000mg/kg) DIBP: 0.1%(1000mg/kg)	--
19-2	Silvery plated metal sheet	Cd: N.D. Pb: N.D. Hg: N.D. Cr ⁶⁺ : N.D. PBBs: N.D. PBDEs: N.D. DBP: ND BBP: ND DEHP:ND DIBP: ND	Cd: 0.01%(100mg/kg) Pb: 0.1%(1000mg/kg) Hg: 0.1%(1000mg/kg) Cr ⁶⁺ : 0.1%(1000mg/kg) PBBs: 0.1%(1000mg/kg) PBDEs: 0.1%(1000mg/kg) DBP: 0.1%(1000mg/kg) BBP: 0.1%(1000mg/kg) DEHP: 0.1%(1000mg/kg) DIBP: 0.1%(1000mg/kg)	--
19-3	Silvery plated metal sheet	Cd: N.D. Pb: N.D. Hg: N.D. Cr ⁶⁺ : N.D. PBBs: N.D. PBDEs: N.D. DBP: ND	Cd: 0.01%(100mg/kg) Pb: 0.1%(1000mg/kg) Hg: 0.1%(1000mg/kg) Cr ⁶⁺ : 0.1%(1000mg/kg) PBBs: 0.1%(1000mg/kg) PBDEs: 0.1%(1000mg/kg) DBP: 0.1%(1000mg/kg)	--

		BBP: ND DEHP:ND DIBP: ND	BBP: 0.1%(1000mg/kg) DEHP: 0.1%(1000mg/kg) DIBP: 0.1%(1000mg/kg)	
19-4	Silver-gray plated metal	Cd: N.D. Pb: N.D. Hg: N.D. Cr ⁶⁺ : N.D. PBBs: N.D. PBDEs: N.D. DBP: ND BBP: ND DEHP:ND DIBP: ND	Cd: 0.01%(100mg/kg) Pb: 0.1%(1000mg/kg) Hg: 0.1%(1000mg/kg) Cr ⁶⁺ : 0.1%(1000mg/kg) PBBs: 0.1%(1000mg/kg) PBDEs: 0.1%(1000mg/kg) DBP: 0.1%(1000mg/kg) BBP: 0.1%(1000mg/kg) DEHP: 0.1%(1000mg/kg) DIBP: 0.1%(1000mg/kg)	--
19-5	Green transparent liquid	Cd: N.D. Pb: N.D. Hg: N.D. Cr ⁶⁺ : N.D. PBBs: N.D. PBDEs: N.D. DBP: ND BBP: ND DEHP:ND DIBP: ND	Cd: 0.01%(100mg/kg) Pb: 0.1%(1000mg/kg) Hg: 0.1%(1000mg/kg) Cr ⁶⁺ : 0.1%(1000mg/kg) PBBs: 0.1%(1000mg/kg) PBDEs: 0.1%(1000mg/kg) DBP: 0.1%(1000mg/kg) BBP: 0.1%(1000mg/kg) DEHP: 0.1%(1000mg/kg) DIBP: 0.1%(1000mg/kg)	--
19-6	Copper-colored plated metal	Cd: N.D. Pb: N.D. Hg: N.D. Cr ⁶⁺ : N.D. PBBs: N.D. PBDEs: N.D. DBP: ND BBP: ND DEHP:ND DIBP: ND	Cd: 0.01%(100mg/kg) Pb: 0.1%(1000mg/kg) Hg: 0.1%(1000mg/kg) Cr ⁶⁺ : 0.1%(1000mg/kg) PBBs: 0.1%(1000mg/kg) PBDEs: 0.1%(1000mg/kg) DBP: 0.1%(1000mg/kg) BBP: 0.1%(1000mg/kg) DEHP: 0.1%(1000mg/kg) DIBP: 0.1%(1000mg/kg)	--
19-7	Blue plastic grains	Cd: N.D. Pb: N.D. Hg: N.D. Cr ⁶⁺ : N.D. PBBs: N.D. PBDEs: N.D. DBP: ND BBP: ND DEHP:ND DIBP: ND	Cd: 0.01%(100mg/kg) Pb: 0.1%(1000mg/kg) Hg: 0.1%(1000mg/kg) Cr ⁶⁺ : 0.1%(1000mg/kg) PBBs: 0.1%(1000mg/kg) PBDEs: 0.1%(1000mg/kg) DBP: 0.1%(1000mg/kg) BBP: 0.1%(1000mg/kg) DEHP: 0.1%(1000mg/kg) DIBP: 0.1%(1000mg/kg)	--

19-8	Lt-yellow transparent liquid	Cd: N.D. Pb: N.D. Hg: N.D. Cr ⁶⁺ : N.D. PBBs: N.D. PBDEs: N.D. DBP: ND BBP: ND DEHP:ND DIBP: ND	Cd: 0.01%(100mg/kg) Pb: 0.1%(1000mg/kg) Hg: 0.1%(1000mg/kg) Cr ⁶⁺ : 0.1%(1000mg/kg) PBBs: 0.1%(1000mg/kg) PBDEs: 0.1%(1000mg/kg) DBP: 0.1%(1000mg/kg) BBP: 0.1%(1000mg/kg) DEHP: 0.1%(1000mg/kg) DIBP: 0.1%(1000mg/kg)	--
20	PVC	Cd: N.D. Pb: N.D. Hg: N.D. Cr ⁶⁺ : N.D. PBBs: N.D. PBDEs: N.D. DBP: ND BBP: ND DEHP:ND DIBP: ND	Cd: 0.01%(100mg/kg) Pb: 0.1%(1000mg/kg) Hg: 0.1%(1000mg/kg) Cr ⁶⁺ : 0.1%(1000mg/kg) PBBs: 0.1%(1000mg/kg) PBDEs: 0.1%(1000mg/kg) DBP: 0.1%(1000mg/kg) BBP: 0.1%(1000mg/kg) DEHP: 0.1%(1000mg/kg) DIBP: 0.1%(1000mg/kg)	--
21	Solid capacitor			
21-1	Gray foil	Cd: N.D. Pb: N.D. Hg: N.D. Cr ⁶⁺ : N.D. PBBs: N.D. PBDEs: N.D. DBP: ND BBP: ND DEHP:ND DIBP: ND	Cd: 0.01%(100mg/kg) Pb: 0.1%(1000mg/kg) Hg: 0.1%(1000mg/kg) Cr ⁶⁺ : 0.1%(1000mg/kg) PBBs: 0.1%(1000mg/kg) PBDEs: 0.1%(1000mg/kg) DBP: 0.1%(1000mg/kg) BBP: 0.1%(1000mg/kg) DEHP: 0.1%(1000mg/kg) DIBP: 0.1%(1000mg/kg)	--
21-2	Black foil	Cd: N.D. Pb: N.D. Hg: N.D. Cr ⁶⁺ : N.D. PBBs: N.D. PBDEs: N.D. DBP: ND BBP: ND DEHP:ND DIBP: ND	Cd: 0.01%(100mg/kg) Pb: 0.1%(1000mg/kg) Hg: 0.1%(1000mg/kg) Cr ⁶⁺ : 0.1%(1000mg/kg) PBBs: 0.1%(1000mg/kg) PBDEs: 0.1%(1000mg/kg) DBP: 0.1%(1000mg/kg) BBP: 0.1%(1000mg/kg) DEHP: 0.1%(1000mg/kg) DIBP: 0.1%(1000mg/kg)	--

21-3	Beige paper tape	Cd: N.D. Pb: N.D. Hg: N.D. Cr ⁶⁺ : N.D. PBBs: N.D. PBDEs: N.D. DBP: ND BBP: ND DEHP:ND DIBP: ND	Cd: 0.01%(100mg/kg) Pb: 0.1%(1000mg/kg) Hg: 0.1%(1000mg/kg) Cr ⁶⁺ : 0.1%(1000mg/kg) PBBs: 0.1%(1000mg/kg) PBDEs: 0.1%(1000mg/kg) DBP: 0.1%(1000mg/kg) BBP: 0.1%(1000mg/kg) DEHP: 0.1%(1000mg/kg) DIBP: 0.1%(1000mg/kg)	--
21-4	Silvery metal pin	Cd: N.D. Pb: N.D. Hg: N.D. Cr ⁶⁺ : N.D. PBBs: N.D. PBDEs: N.D. DBP: ND BBP: ND DEHP:ND DIBP: ND	Cd: 0.01%(100mg/kg) Pb: 0.1%(1000mg/kg) Hg: 0.1%(1000mg/kg) Cr ⁶⁺ : 0.1%(1000mg/kg) PBBs: 0.1%(1000mg/kg) PBDEs: 0.1%(1000mg/kg) DBP: 0.1%(1000mg/kg) BBP: 0.1%(1000mg/kg) DEHP: 0.1%(1000mg/kg) DIBP: 0.1%(1000mg/kg)	--
21-5	Silvery metal sheet	Cd: N.D. Pb: N.D. Hg: N.D. Cr ⁶⁺ : N.D. PBBs: N.D. PBDEs: N.D. DBP: ND BBP: ND DEHP:ND DIBP: ND	Cd: 0.01%(100mg/kg) Pb: 0.1%(1000mg/kg) Hg: 0.1%(1000mg/kg) Cr ⁶⁺ : 0.1%(1000mg/kg) PBBs: 0.1%(1000mg/kg) PBDEs: 0.1%(1000mg/kg) DBP: 0.1%(1000mg/kg) BBP: 0.1%(1000mg/kg) DEHP: 0.1%(1000mg/kg) DIBP: 0.1%(1000mg/kg)	--
21-6	Silver-grey metal shell	Cd: N.D. Pb: N.D. Hg: N.D. Cr ⁶⁺ : N.D. PBBs: N.D. PBDEs: N.D. DBP: ND BBP: ND DEHP:ND DIBP: ND	Cd: 0.01%(100mg/kg) Pb: 0.1%(1000mg/kg) Hg: 0.1%(1000mg/kg) Cr ⁶⁺ : 0.1%(1000mg/kg) PBBs: 0.1%(1000mg/kg) PBDEs: 0.1%(1000mg/kg) DBP: 0.1%(1000mg/kg) BBP: 0.1%(1000mg/kg) DEHP: 0.1%(1000mg/kg) DIBP: 0.1%(1000mg/kg)	--
21-7	Lt-brown material	Cd: N.D. Pb: N.D. Hg: N.D.	Cd: 0.01%(100mg/kg) Pb: 0.1%(1000mg/kg) Hg: 0.1%(1000mg/kg)	--

Shenzhen Most Technology Service Co., Limited

No.5, Nangshan 2th Rd., North Hi-Tech Industrial park, Nanshan Shenzhen Guangdong, China

Tel:(86) 755-86026850

Http:// www.szmost.com

Report No.: MTHN19070127

Shenzhen Guangdong, China

Fax:(86) 755-26013350

Email: szmost@szmost.com

		Cr ⁶⁺ : N.D. PBBs: N.D. PBDEs: N.D. DBP: ND BBP: ND DEHP:ND DIBP: ND	Cr ⁶⁺ : 0.1%(1000mg/kg) PBBs: 0.1%(1000mg/kg) PBDEs: 0.1%(1000mg/kg) DBP: 0.1%(1000mg/kg) BBP: 0.1%(1000mg/kg) DEHP: 0.1%(1000mg/kg) DIBP: 0.1%(1000mg/kg)	
21-8	Red ink	Cd: N.D. Pb: N.D. Hg: N.D. Cr ⁶⁺ : N.D. PBBs: N.D. PBDEs: N.D. DBP: ND BBP: ND DEHP:ND DIBP: ND	Cd: 0.01%(100mg/kg) Pb: 0.1%(1000mg/kg) Hg: 0.1%(1000mg/kg) Cr ⁶⁺ : 0.1%(1000mg/kg) PBBs: 0.1%(1000mg/kg) PBDEs: 0.1%(1000mg/kg) DBP: 0.1%(1000mg/kg) BBP: 0.1%(1000mg/kg) DEHP: 0.1%(1000mg/kg) DIBP: 0.1%(1000mg/kg)	--

Note:

-N.D. = not detected (<5ppm)

-N.A. = not applicable

- “▼”= The sample is negative for Cr(VI) – The Cr(VI) concentration is below 0.10 µg/cm². The coating is considered a non-Cr(VI) based coating.

“#” = copper alloy. The lead content which is under 4% (40000ppm) is exempted from the requirement of RoHS Directive 2011/65/EU (RoHS)

“PBBs”=Contains: Monobromobiphenyl; Dibromobiphenyl; Tribromobiphenyl; Tetrabromobiphenyl; Pentabromobiphenyl; Hexabromobiphenyl; Heptabromobiphenyl; Octabromobiphenyl; Nonabromobiphenyl; Decabromobiphenyl.

“PBDEs”= Contains: Monobromodiphenyl ether; Dibromodiphenyl ether; Tribromodiphenyl ether; Tetrabromodiphenyl ether; Pentabromodiphenyl ether; Hexabromodiphenyl ether; Heptabromodiphenyl ether; Octabromodiphenyl ether; Nonabromodiphenyl ether; Decabromodiphenyl ether..;

Not directed is reported when the reading is less than detection limit value.

- 1) This report is not a formal test report but only consolidating the test data listed above;
- 2) The above test report of raw material which is not issued by MOST is offered by the applicant as a reference of consolidated data;
- 3) MOST has not conducted any verification on the test data in the above test report that is not issued by MOST.
- 4) This report can not be issued repeatedly unless there is a written approval by the lab.

Shenzhen Most Technology Service Co., Limited

No.5, Nangshan 2th Rd., North Hi-Tech Industrial park, Nanshan Shenzhen Guangdong, China

Tel:(86) 755-86026850

Http:// www.szmost.com

Report No.: MTHN19070127

Fax:(86) 755-26013350

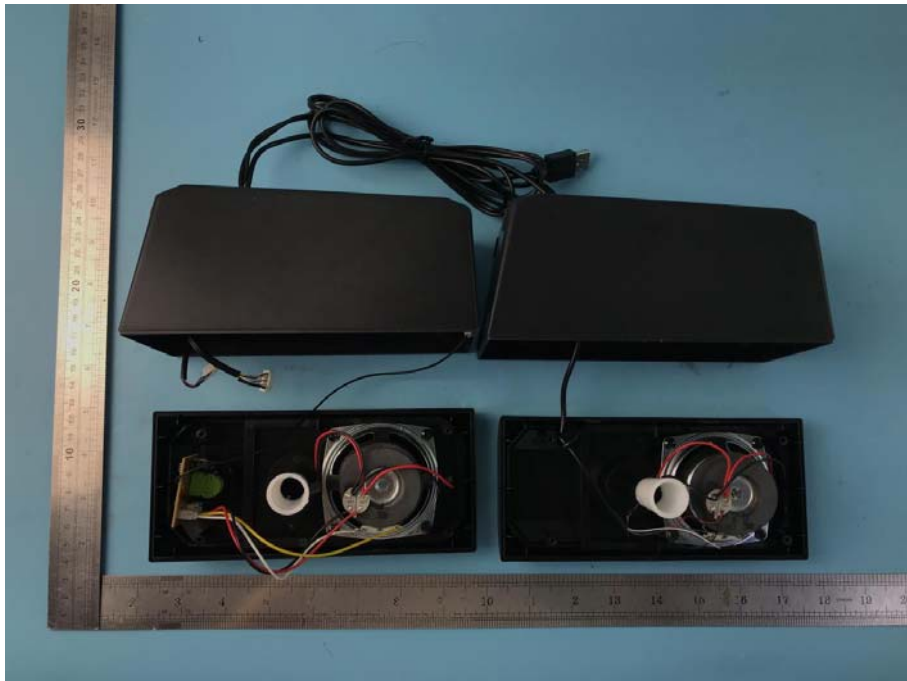
Email: szmost@szmost.com

APPENDIX I

(Photos of the Sample)

Appendix 1

Front views of "2.0Speaker"



----- End of report -----